



Cambridge & North Dumfries
Community Foundation



OPEN TO ALL GRADUATE STUDENTS!

AGES FOUNDATION RESEARCH FELLOWSHIP & BURSARIES

The **rare Charitable Research Reserve** has partnered with **Cambridge & North Dumfries Community Foundation**, **Ages Foundation Fund** to financially assist students in pursuit of higher education as they tackle important environmental issues. The Research Fellowship & Bursaries program will allow students to study in a relatively undisturbed, yet highly accessible site in Waterloo Region. Applications that utilize multiple knowledge systems and diverse methodologies will be prioritized. The monetary awards will help ensure successful candidates have the necessary resources to conduct and report on their research at **rare**.

We support diverse, inclusive and equitable practices and approaches to environmental issues as we work toward meaningful reconciliation with Indigenous Peoples (self-identified and status First Nations, Métis & Inuit) of Turtle Island. We encourage applications from Indigenous students utilizing Indigenous and/or Western knowledge systems and methodologies.

Four recipients will be selected and awarded amounts of: \$4,000, \$2,000, and two \$1,000 awards.

NOW ACCEPTING APPLICATIONS

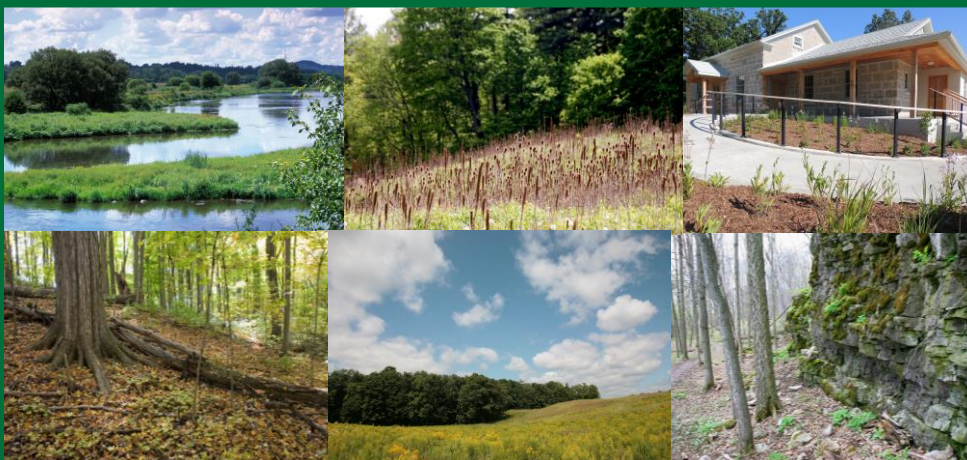
Eligibility:

- Canadian or International graduate student who will conduct research on the **rare Charitable Research Reserve** property between May 2019 and April 2020.
- Research is environment focused, and takes a landscape-scale approach to this year's theme:

RESEARCH-BASED GOVERNANCE, POLICY DEVELOPMENT AND INNOVATION

Research opportunities exist to examine the socio-ecological system and develop successful strategies for ecological, social and economic sustainability. We welcome applications from any discipline that may ultimately lead to better informed conservation practices that may shape governance and policy.

APPLICATIONS WILL BE ACCEPTED UNTIL APRIL 1ST, 2019



The **rare Charitable Research Reserve** owns 900+ acres of land in Waterloo Region, Ontario, Canada at the confluence of the Grand and the Speed Rivers. The goal of **rare** is to protect this environmentally sensitive landscape intact, in perpetuity, and to promote the use of the property for research and education. We are open to working collaboratively with researchers to undertake manipulative studies on the land. *Accommodations and lab space are available onsite.*

Photos: T.Beaubien, P.Kelly, L.Harnett

For more information, visit raresites.org/research/scholarship/ or contact
Jenna Quinn at 519-650-9336 x111
jenna.quinn@raresites.org